

## FRONT LIFT INSTRUCTIONS!

Lift up the ATV with an ATV jack of some sort and remove the front wheels.

Remove the lower shock mounting bolt and let the a-arm drop down so you can start putting in the lift kit.



Slide a 3/8" x 2" bolt through one of the lift plates pointing towards the back of the machine, through hole "A", then slide the bolt through the stock shock mounting bracket, and through the aluminum spacer provided. Place the other lift plate using the same hole "A" on the threads of that bolt and put a nut on the bolt, **BUT ONLY PUT IT ON A COUPLE OF THREADS!**



Slide a 5/16" x 2" bolt through hole "B" of the front plate, and rotate the second plate into position so the bolt goes through the same hole on the second plate and put a nut on, **AGAIN, ONLY PUT IT ON A**

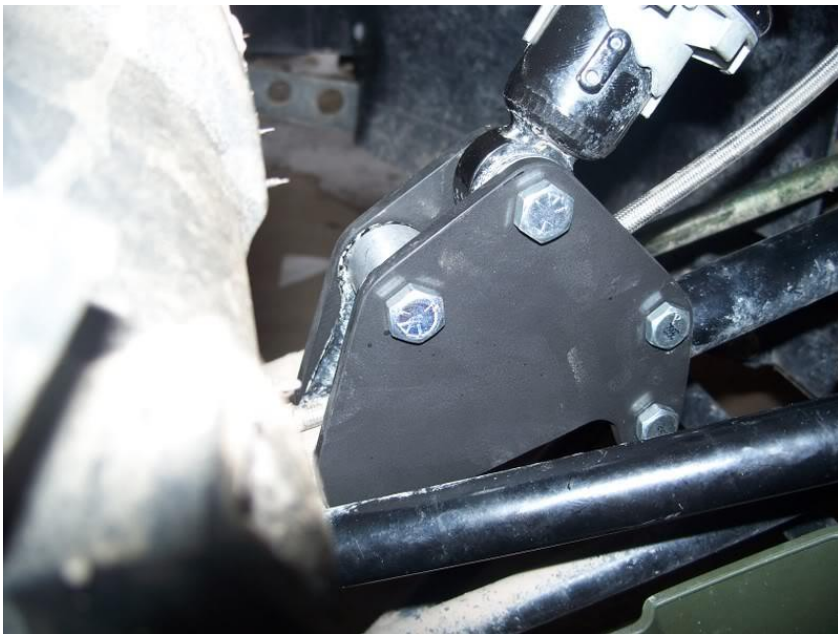
## COUPLE THREADS AT MOST!

Then repeat the process but putting a 5/15" bolt through holes "C" and "D", put the nuts on only a couple threads.

Now line the bottom end of the shock up between the 2 plates and start to slide a 3/8" bolt through hole "E" of the front plate, as it passes through the hole, place a washer on the bolt between the inside of the plate and the side of the shock knuckle. Continue to slide the bolt through the hole in the shock knuckle and use a second washer between the back side of the shock knuckle and the second plate. Finish sliding the bolt all the way through the second plate and put the nut on a couple threads.

Tighten the bolts, a little bit at a time on each bolt to make sure they all get threaded up onto the nylock portion of the nuts.

It should look like this on the TRV, and the same way on the single rider ATV with the different plates.



Rear Arctic Cat lift instructions!!!!

Lift the machine off the floor with some type of ATV lift and remove the back tires.

Remove the top shock mounting bolt.



Loosen the a-arm bolt pictured below, loosen it enough that the nut almost comes off the bolt, but not quite all the way, then push it towards the back of the machine so the head of the bolt is pushed towards the rear of the machine leaving a space for one of the brackets.



Now the lift block and bracket need to be installed in the stock shock mounting hole, make sure the offset side of the rear block is towards the back of the machine as pictured below...



Its kind of tricky, but you now need to get the open end of the long curved bracket to hook over the a-arm bolt you loosened, then have the square end of that bracket line up with the hole in the lift block inside the channel on the block, but on the forward side of that channel or machined slot.

Once you have this in place, you need to get the end of the shock aligned and insert a 3/8" bolt. It is a bit tricky, but it will all line up, you may need to move the hub on the ATV slightly up or down to get all 3 holes aligned, a second set of hands makes this much easier.

Once you get that bolt into place, put the nut on it but dont tighten it just yet.

Make sure the open hooked end of the curved bracket is predded all the way down onto the a-arm bolt that we loosened earlier. Once it is pressed down all the way onto that bolt, you can tighten the bolt back up good and tight.

You can now tighten the shock mounting bolt that goes through the block, the curved bracket and the shock.

It should look just like this...



Now repeat on the other side.